

MARTIN COUNTY PLAZA

BEING A REPLAT OF
 REVISED AND AMENDED PLAT OF BLOCKS 48,49,50 AND 38
 BROADWAY SECTION OF ST. LUCIE ESTATES
 AND OF ST. LUCIE ESTATES SECTION 4, BLOCK 27
 (PLAT BOOK 3, PAGE 102)
 AND BROADVIEW SECTION OF ST. LUCIE ESTATES SUBDIVISION
 (PLAT BOOK 1, PAGE 4)
 SECTION 3, TWP.38 S.,RGE. 41 E.
 CITY OF STUART, MARTIN COUNTY, FLORIDA

I, MARSHA STILLER, Clerk of the Circuit Court of Martin County, Florida, hereby certify that this plat was filed for record in Plat book _____ page _____, Martin County, Florida, public records, this _____ day of _____, 1992

MARSHA STILLER, CLERK
 CIRCUIT COURT
 MARTIN COUNTY, FLORIDA

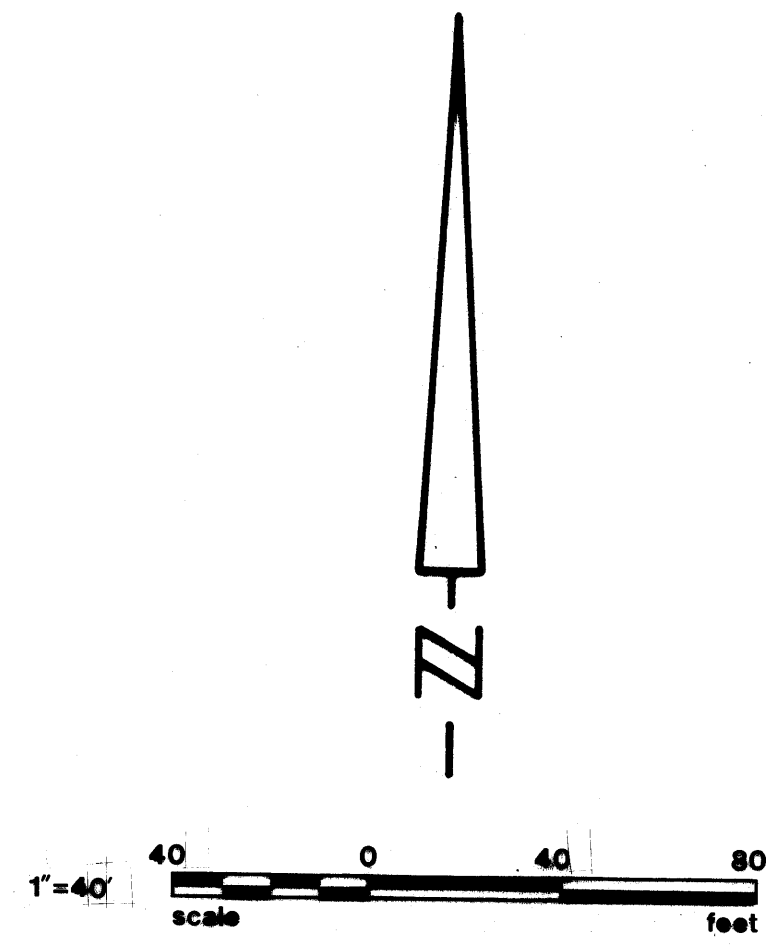
BY: _____
 DEPUTY CLERK

FILE NO. _____

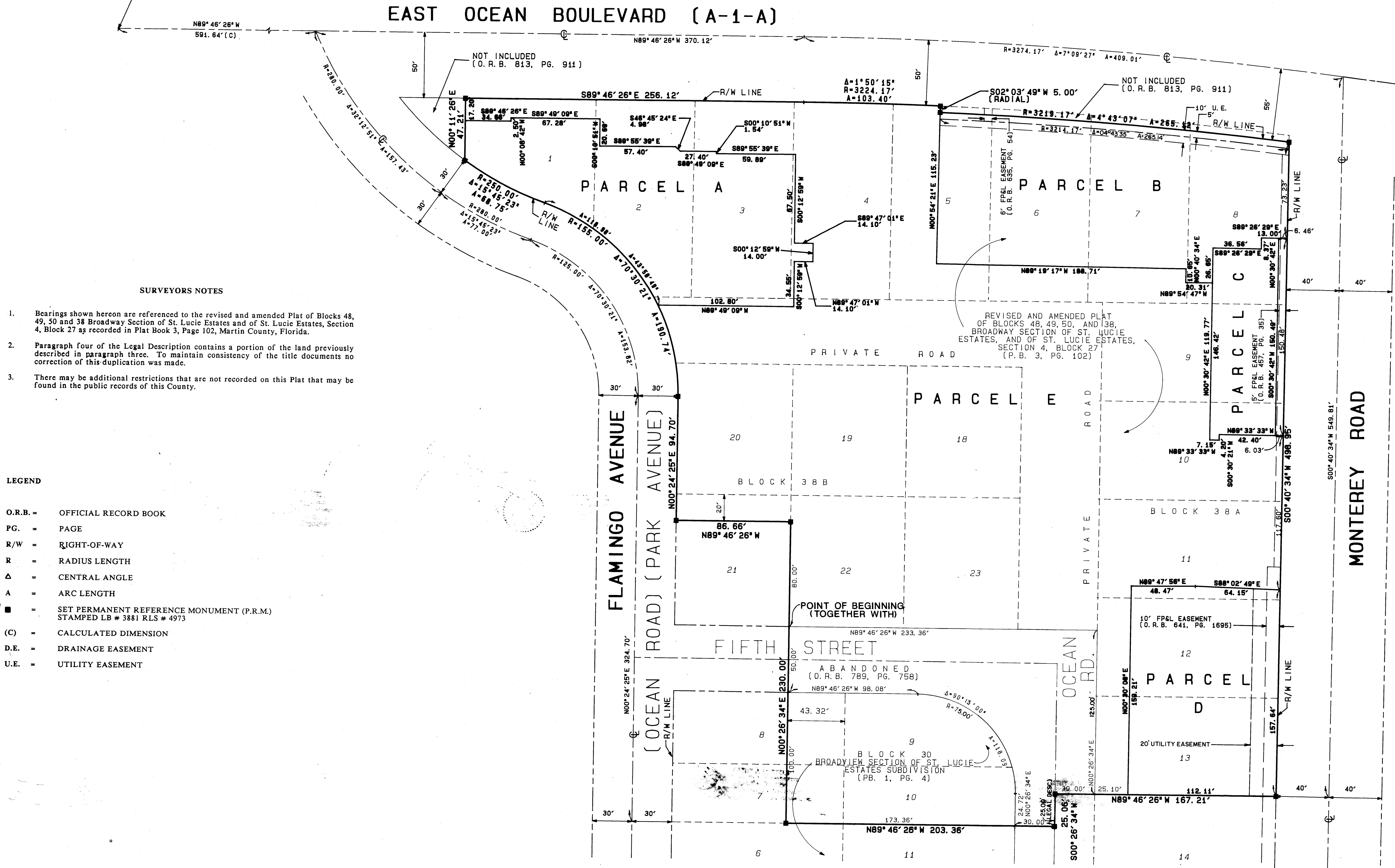
SHEET 2 OF 2

Hutcheon Engineers
 a division of Kimley-Horn and Associates, Inc.
 11 East Osceola Street, Stuart, Florida 34994-2114

OCTOBER 1992



S.W. CORNER
 GOV'T LOT 2
 SECTION 3, T. 38S., R. 41E.
 N89° 46' 26" W
 591.64' (C)



SURVEYORS NOTES

- Bearings shown hereon are referenced to the revised and amended Plat of Blocks 48, 49, 50 and 38 Broadway Section of St. Lucie Estates and of St. Lucie Estates, Section 4, Block 27 as recorded in Plat Book 3, Page 102, Martin County, Florida.
- Paragraph four of the Legal Description contains a portion of the land previously described in paragraph three. To maintain consistency of the title documents no correction of this duplication was made.
- There may be additional restrictions that are not recorded on this Plat that may be found in the public records of this County.

LEGEND

- O.R.B. = OFFICIAL RECORD BOOK
- PG. = PAGE
- R/W = RIGHT-OF-WAY
- R = RADIUS LENGTH
- Δ = CENTRAL ANGLE
- A = ARC LENGTH
- = SET PERMANENT REFERENCE MONUMENT (P.R.M.)
 STAMPED LB # 3881 RLS # 4973
- (C) = CALCULATED DIMENSION
- D.E. = DRAINAGE EASEMENT
- U.E. = UTILITY EASEMENT